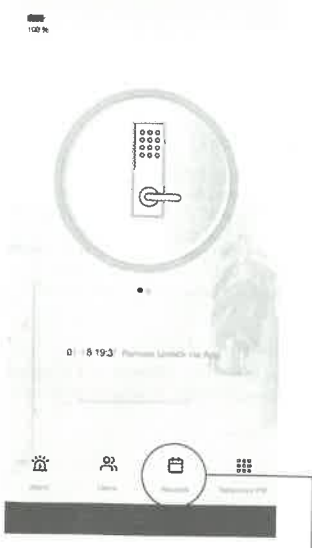


### 6.3 Records

#### Step 1:



Click the **Records** icon at the bottom right of the device page.

#### Step 2:



Review all lock entries and events by date and time. Once **Users** has been setup and accounts are linked to user IDs on the lock, their details will appear on this page.

### 6.4 Other functions

**1. Alarm icon.**  
Shows record of alarms tripped at the lock (e.g. hijack alarm).

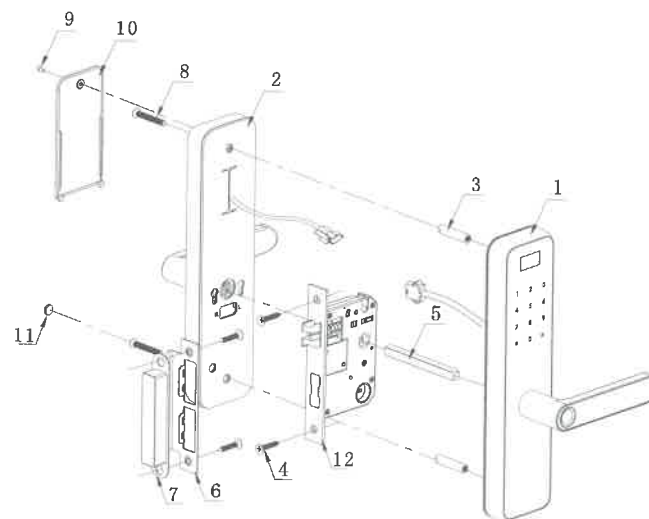
**2. Users icon.**  
Allows users to be added to the lock and their user details recorded as members. There are 2 types of members, Family and Others:

- a. Family.  
A Family user will be able to control the lock and all other products connected to the main Home account (this member must have their own user account on their own mobile app.)
- b. Others.  
An Others user is only added to record their details with a door event. For example, if a User X's user IDs are 002 for fingerprint, 003 for key card and 004 for password, these details can be recorded under User X's profile. Then, when User X opens the lock, it will show in the **Records** page as User X.  
\*\*User IDs are allocated automatically by the lock when a user is added (Refer section 4.6)\*\*

**3. App Settings.**  
At the device home page, the top right icon will open additional settings and information including, device information, automation share device and FAQs & Feedback.

For further information on these functions and others including adding users and sharing devices with other members, visit [lemaar.com.au](http://lemaar.com.au)

## 1. Exploded drawing

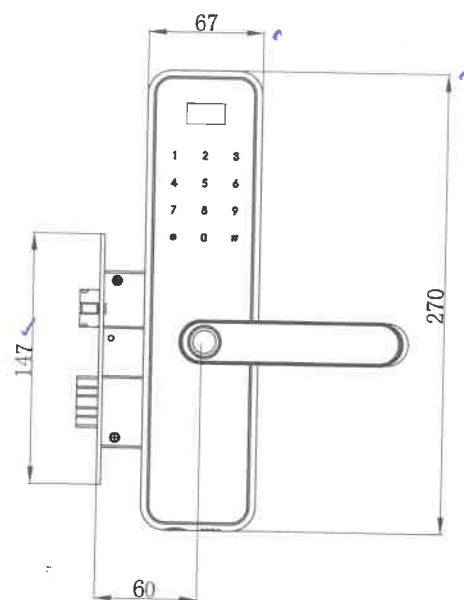


No.	Part name	Qty
1	Front plate components	1
2	Back plate components	1
3	M5 x M6 x 35 screw bolt	2
4	M4 x 25 countersunk head screw	4
5	Spindle	1
6	Strike plate	1
7	Strike plate box	1
8	M5 x 35 screw	2
9	M3 x 6 screw	1
10	Battery box cover	1
11	Screw cap	1
12	Mortise	1

### 6.5 Notes

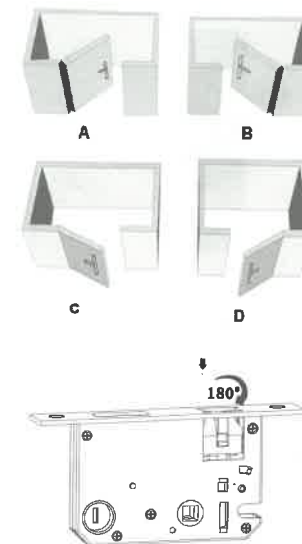
Blank lined area for notes.

## 2. Product dimensions



## 3. Installation steps

3.1 Identify the opening direction before installation.



(1)

## 6. Basic app functions and operations.

### 6.1 Setting a remote dynamic password

Step 1:



Swipe right on the device page lock icon (in the middle of the app) to access the function.

Step 2:



To generate a remote dynamic password, click the **Remote dynamic password** button

Step 3:



An 8 digit code will be generated which will invalidate after 5 minutes.

Step 4:

Click **Copy password** to copy the password to your mobile phone's clipboard. This can then be pasted and shared as a text message, WhatsApp message etc.

Step 5 (at the lock):

Before any remote dynamic password can be used, the lock must first be synced by pressing "9" then "#" on the keypad to update the lock data. It is suggested to sync the lock as soon as the password is set or request the user to simply press "9" then "#" before inputting their remote dynamic password.

General Information

The remote dynamic password is a temporary type of password which can be used for one time only.

### 6.2 Setting a temporary password

Step 1:



Click the **Temporary PW** icon at the bottom right of the device page.

Step 2:



For the initial use, click **Add** to open the Temporary Code Setting screen

Step 3:



At the Temporary Code Setting screen input a 7 digit password or generate a random code by pressing the **Get Randomly** button. Complete the other

required details such as **Name** (e.g Plumber), **Effect of time** (start date/time), and **The failure time** (end date/time).

Once details are completed and have been automatically validated (e.g the start date is not later than the end date), click **Done**. The temporary password will be automatically copied to your mobile phone's clipboard.

Step 4:

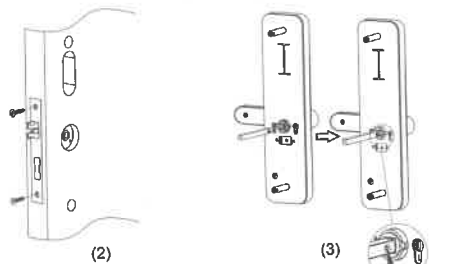


The Temporary PW page will now show all current password and their status. To add additional temporary passwords, press the "+" on the top right corner of the screen.

Step 5 (at the lock):

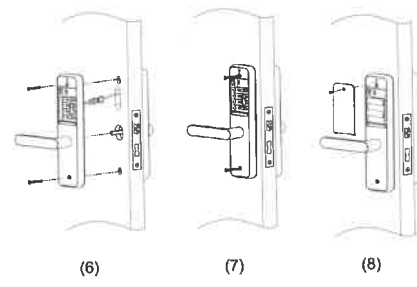
Before any temporary password can be used, the lock must first be synced by pressing "9" then "#" on the keypad to update the lock data. It is suggested to sync the lock as soon as the password is set or request the user to simply press "9" then "#" before inputting their temporary password. **Please note:** A deleted temporary password is fully removed after the lock is synced.

2 Put the mortise into the hole and keep the latch bolt upwards. Then fasten the mortise lock with screws. (2)

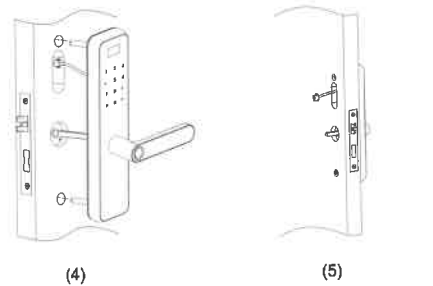


3 Push the spring in and fix the spindle to the clutch on front plate. (3)

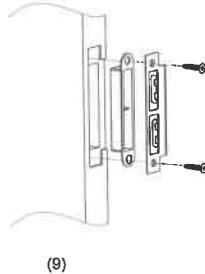
5 Connect the cable of back plate with the bus bar end of the cable. Align the back handle to the spindle and fix the back plate with screws.(6) & (7) & (8)



4 Put the bus bar end of the cable through the door hole from outside to inside door and put the spindle into the hole. (4) & (5)

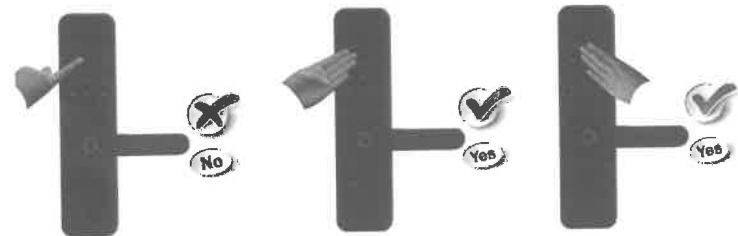


6 Put the strike plate cup and strike plate in right place and fasten them with screws. (9)



## 4. Lock functions and operations

Remarks: Activate the keypad by touching it with your palm or the back of your hand to unlock by password or to set the door lock. It is better to touch the panel with more fingers or with a larger area of the back of your hand.



### 4.1 Initial access

Initial user password is "123456". Any card (tapped on the keypad) or fingerprint can unlock the lock in initial status. Initial Admin password is "000000". Initial user password "123456" will be invalid after adding new Admin information.

### 4.2 Entering Admin information

Input of Admin fingerprint/Admin password/Admin card will be regarded as Admin information.

Input Admin information (\* + #)

= Input Admin fingerprint, card or password

\*\* + # = Press \*, and then press #.

# means "OK" or "Enter of Menu function key".

\*\* means "Delete"/"Back", press \* to delete the last input digit

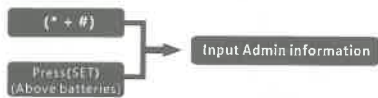
**Please note:** The first Admin password set cannot be edited or deleted. Do not use initial access codes when setting passwords (i.e. 000000 or 123456) as this will pose a security risk.

**Step 4:**



**Pairing the device:**

1. Ensure the pairing method (top right corner) is set to **EZ Mode**.
2. Reset the lock to **factory settings** (refer section 4.9).
3. Enable Wi-Fi pairing on the lock through the lock function settings:
  - a. Access the lock's function settings by inputting Admin information into the lock. (Refer Section 4.3 for further guidance).



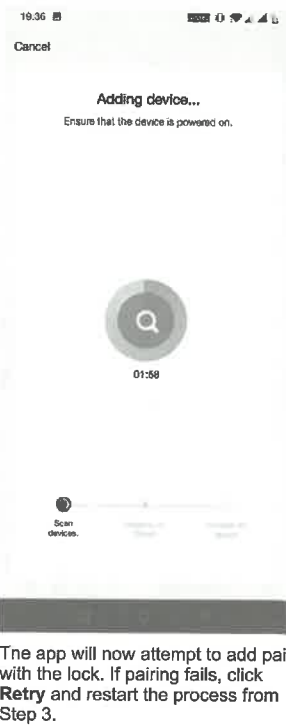
**b. Select Wifi settings then Add device.**



The lock is ready to pair once the **Wait adding...** search screen appears on the LCD panel.

3. While the lock is searching for a device, navigate back the mobile app and select **Confirm the indicator is blinking rapidly**. Then click **Next**.

**Step 5:**



The app will now attempt to add pair with the lock. If pairing fails, click **Retry** and restart the process from Step 3.

**Step 6:**



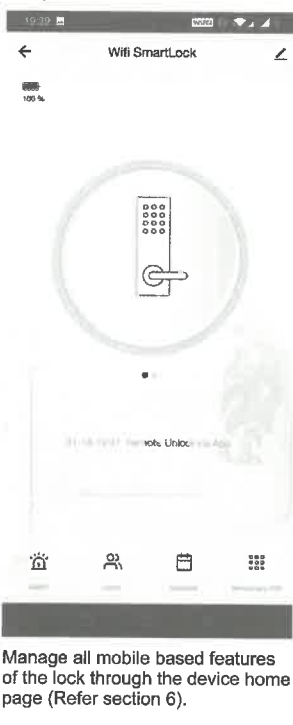
An **Added successfully** screen will show once completed. Click **Done**. **\*\*Congratulations! You have successfully paired the lock.\*\***

**Step 7:**



The lock will appear on the Home screen along with any other added devices. Click **Wifi SmartLock** to access the device home page

**Step 8:**



Manage all mobile based features of the lock through the device home page (Refer section 6).

**4.3 Lock function settings**

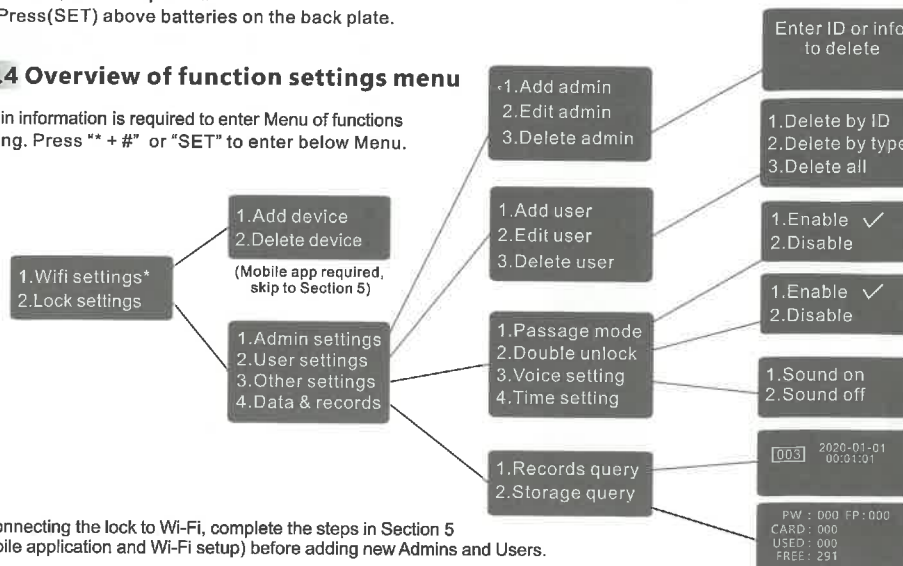


Tips: There are two ways to enter functions setting.

1. Press \*, and then press #.
2. Press(SET) above batteries on the back plate.

**4.4 Overview of function settings menu**

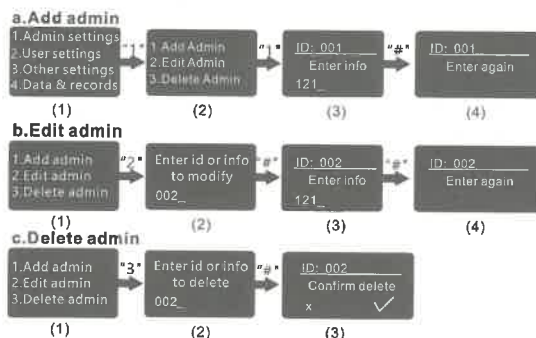
Admin information is required to enter Menu of functions setting. Press "\*" + "#" or "SET" to enter below Menu.



\*If connecting the lock to Wi-Fi, complete the steps in Section 5 (Mobile application and Wi-Fi setup) before adding new Admins and Users.

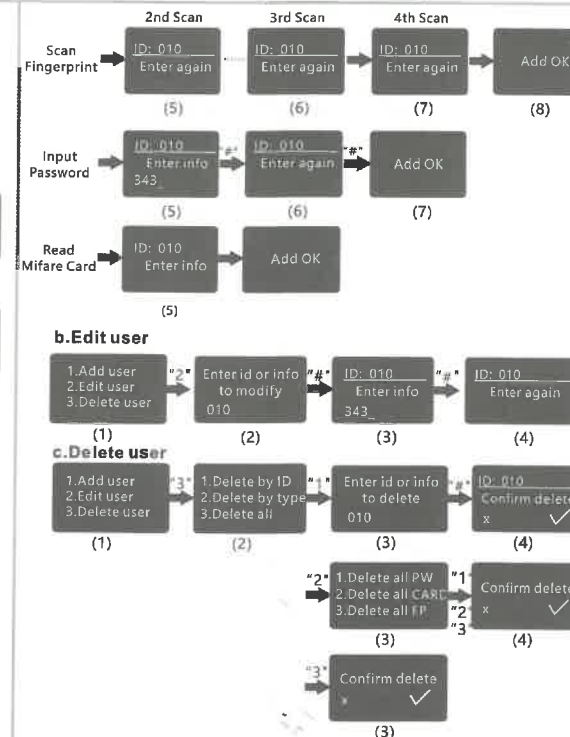
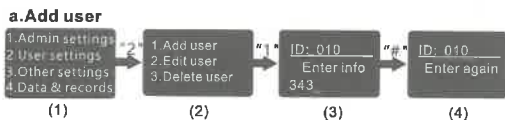
**4.5 Admin settings**

Admin settings allows the user to add new Admin information, to edit Admin information and to delete Admin information. Admin information could be a fingerprint, card, or a group of passwords. Add new Admin information according to the instructions on screen.



**4.6 User settings**

User settings is to add new User information, to edit User information and to delete User information. User information could be a fingerprint, card, or a group of passwords. Manage User information according to the instructions on screen.

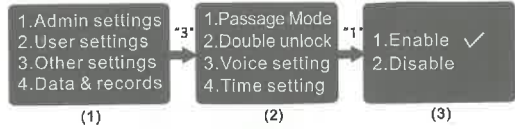


Each registered entry method (i.e. password, card or fingerprint) is allocated an ID which can be linked to a user in the mobile app.

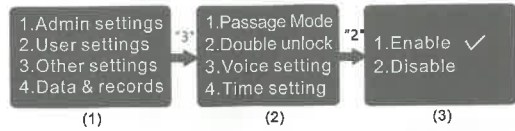
#### 4.7 Other settings

Other settings includes Passage mode, Double unlock, voice setting and time setting.

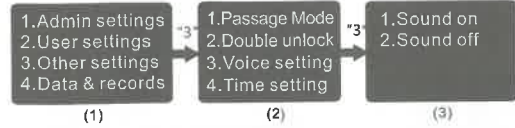
##### a. Passage mode



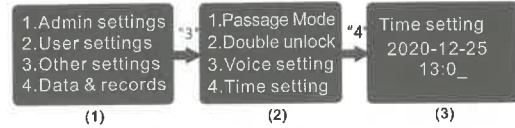
##### b. Double unlock



##### c. Voice setting



##### d. Time setting



Time setting must be yyyy-mm-dd format for date and 24 hr clock for time.

#### 4.9 Factory reset

Long press the SET button above battery box for 5s to do the factory reset. All unlock records, passwords and saved data will clear when factory reset is successful. Any fingerprint or blank card now has access to unlock in Initial status.

#### 4.10 Lock sync

To synchronise the lock with the cloud (once Wi-Fi has been set up) press "9" then "#" on the touch panel. This function is used to sync data generated by the mobile app (e.g. temporary or remote dynamic passwords). Syncing the lock can take anywhere between 3-15 seconds depending on Wi-Fi strength and connection.

Syncing the lock will also send an unlock request to a connected device if the mobile app is open.

#### 4.11 Other functions

a. The touch panel will be locked and inactive for 90 seconds if the password is entered incorrectly 5 times.

b. Scramble function:

Add random numbers before and/or after a valid password and press "#" to unlock the lock (e.g. xxx "user password" xxx "#"). The total length of the scramble password should be less than 19 digits.

c. The display will turnoff and enter sleep mode after 10 seconds of inactivity

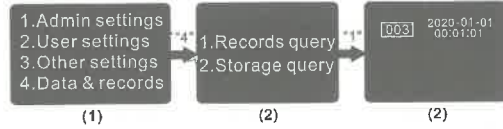
d. The lock will alarm when unlocked every time when the voltage is lower than 4.8V. The lock still can be unlocked for extra 200 times after 1st alarm. Please change the batteries in time after the 1st alarm.

e. External power USB interface: Connect power bank to gain power when the batteries are not changed in time.

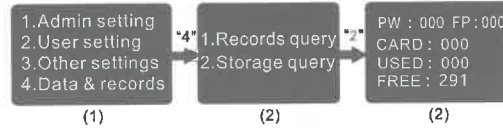
f. When Passage mode is enabled, there will be a voice notice when unlocking and locking the door.

#### 4.8 Data & records

##### a. Records query



##### b. Storage query



#### 4.12 Specifications

Power supply	4 x 1.5V AA Alkaline batteries
Static current	< 50uA
Rating current	< 250mA
Capacity	600 IDs (Max 9 Admin + 591 User)
Fingerprint capacity	100
Card type	Mifare card
Operating temp.	-10°C - 60°C
Relative humidity	20% - 85%

# Fingerprint Door Lock Mobile Application

## 5. Mobile application and Wi-Fi setup

### 5.1 Download mobile app

Download the app by searching Tuya Smart in mobile app stores or scanning the QR code below.



### 5.2 Account Registration

1. Once the app has been downloaded and installed, click "Sign Up" and read the Privacy Policy after it pops up. Click **Agree** and enter the registration page. If you already have an account and are not signed in automatically, choose **Log In** and enter your login details.

2. If registering for the first time, please use your current email address. The country/region of the app will be the same as the country/region in your phone settings. Enter email and click **Get Verification Code**.

Enter the verification code (sent to your provided email address) and set your password in the next screen. Click **Done**.

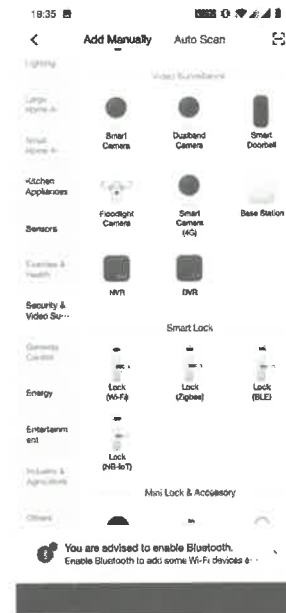
### 5.3 Pairing the lock with the mobile app (basic instructions)

#### Step 1:



From the mobile app Home screen, click **Add Device** to open the device menu.

#### Step 2:



At the device menu, choose the **Security & Video Surveillance** category on the left hand side menu, then **Lock (Wi-Fi)** in the Smart Lock section.

#### Step 3:



Enter your Wi-Fi details and password. **\*\*Only 2.4G Wi-Fi is supported. If your router is configured to 5G, click the blue link for router setting instructions\*\***